

Z-KEY

INDUSTRIAL GATEWAY SERIAL DEVICE SERVER

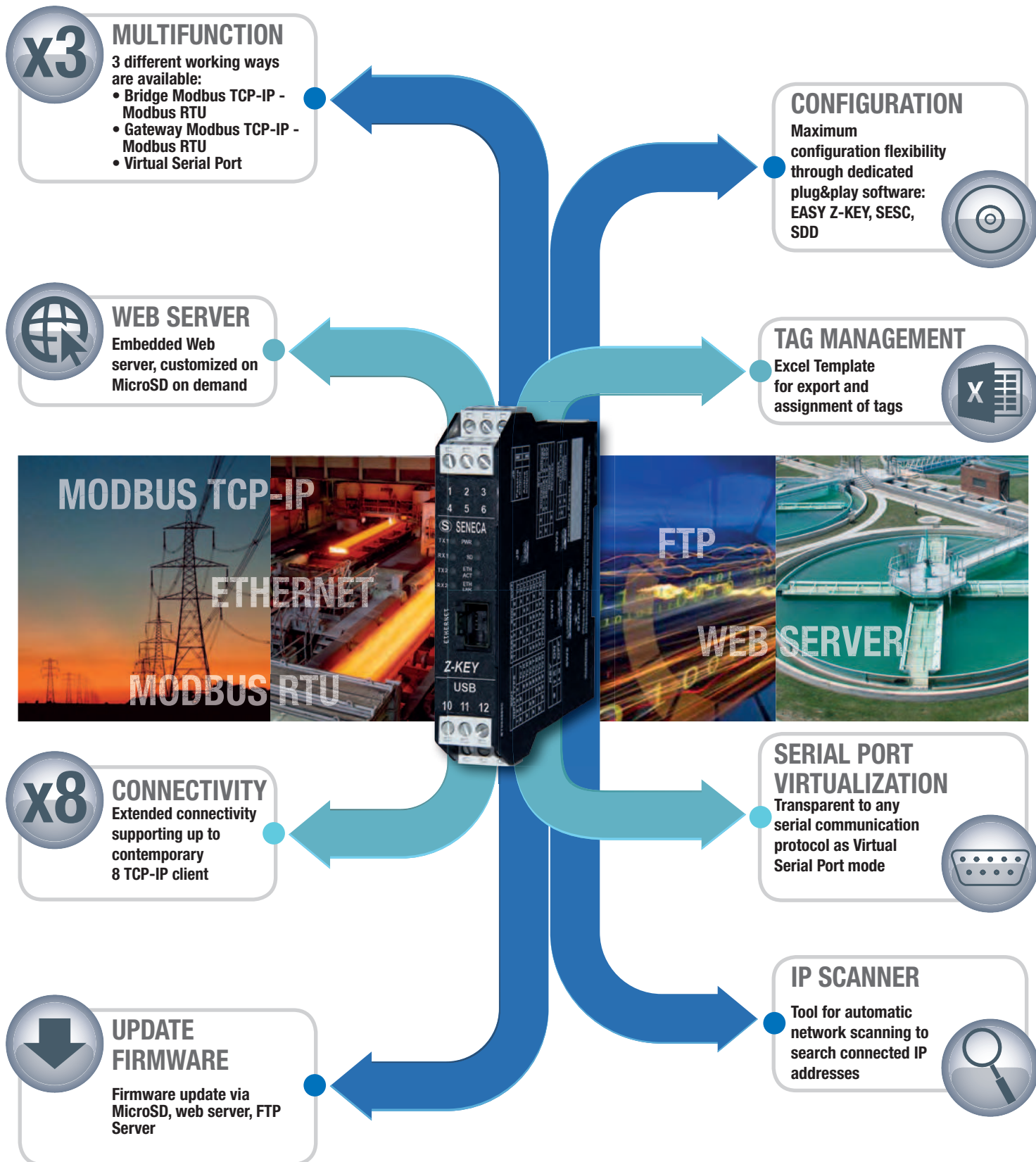


***Your serial and Ethernet devices
always reachable***



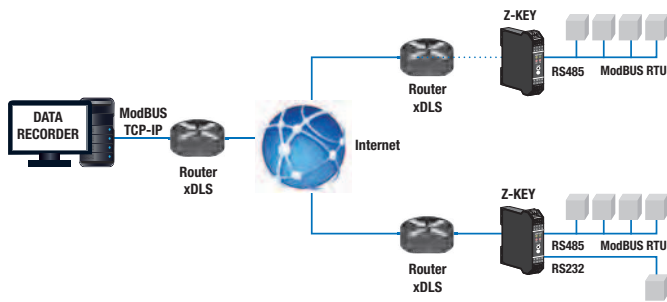
Z-KEY INDUSTRIAL GATEWAY - SERIAL DEVICE SERVER

Z-KEY can extend existing networks allowing the process data flow between different layer of IT and industrial communication architecture. **Z-KEY** is useful for MODBUS RTU / TCP-IP communication acting in different working mode and increasing the number of nodes and distances within the network. The device can also extend a serial network working as transparent Remote virtual COM with any serial communication protocol.

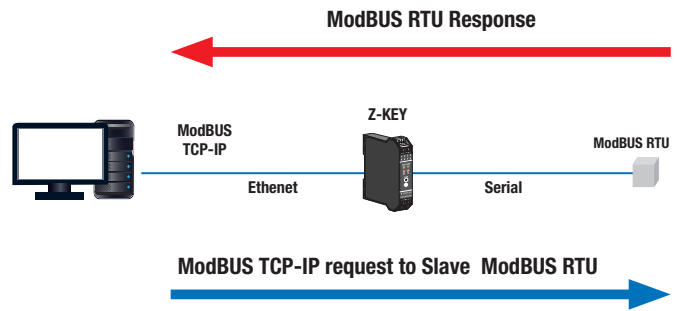


APPLICATION NOTE

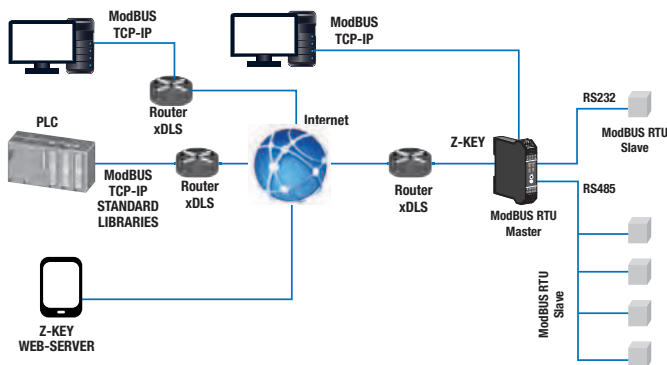
Bridge Modbus TCP-IP – Modbus RTU (1)



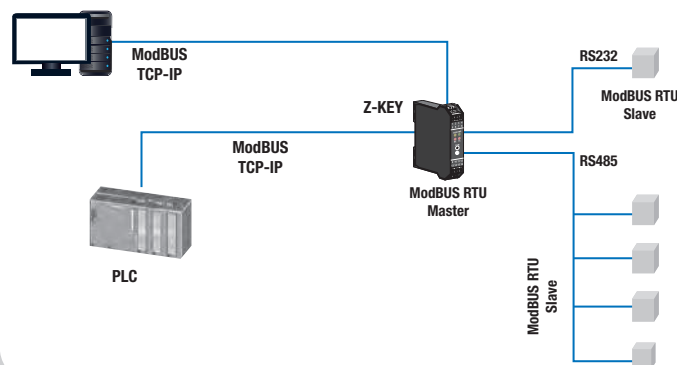
Bridge Modbus TCP-IP – Modbus RTU (2)



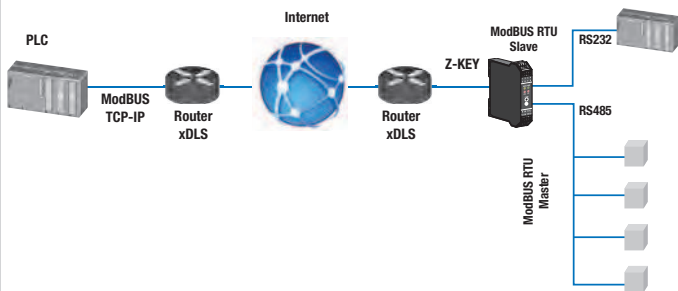
Gateway Modbus TCP-IP - Modbus RTU, 2 Master ports (1)



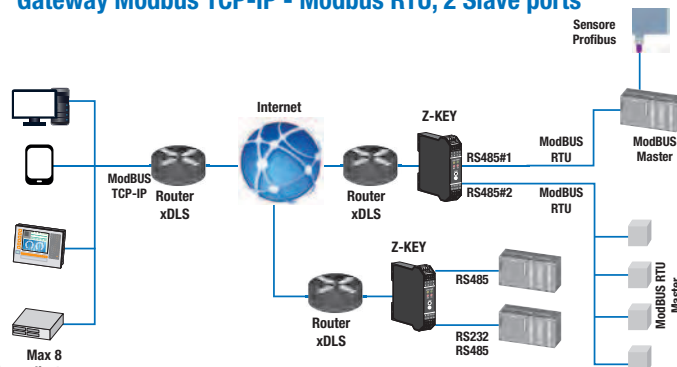
Gateway Modbus TCP-IP - Modbus RTU, 2 Master ports (2)



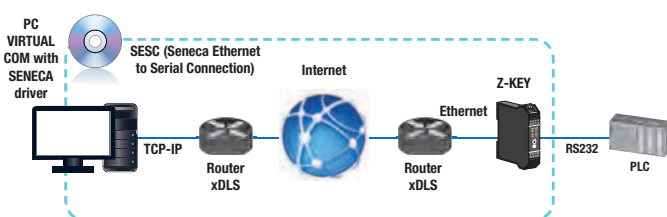
Gateway Modbus TCP-IP - Modbus RTU, 1 Master port, 1 Slave port



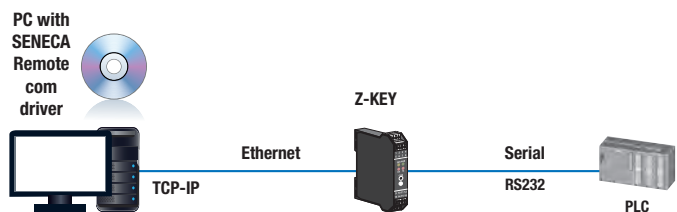
Gateway Modbus TCP-IP - Modbus RTU, 2 Slave ports



Remote Serial Port COM (1)

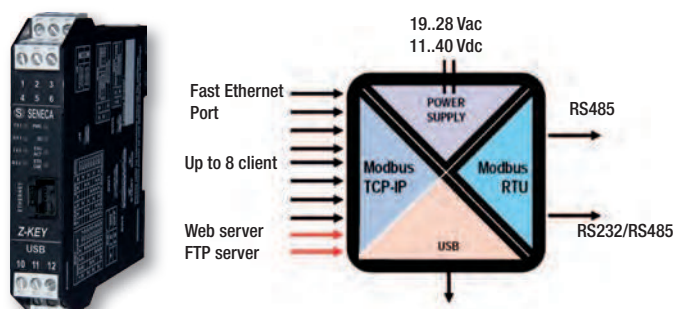


Remote Serial Port COM (2)



Z-KEY

INDUSTRIAL GATEWAY - SERIAL DEVICE SERVER



Z-KEY is a device with integrated communication with functions like Bridge, Ethernet / Modbus Gateway (from Modbus RTU to Modbus TCP) and Virtual COM.

There are available 1 Fast Ethernet port 10/100 Mbps e 2 serial ports (RS485, RS232 / RS485), and Z-KEY can also be configured from remote through Excel template, built-in web server and dedicated software (SESC, SDD, EASY Z-KEY).

In gateway mode the device can collect 500 tags; In bridge mode Z-KEY can collect a virtually unlimited number of tags.

TECHNICAL FEATURES

GENERAL DATA

Power supply	11..40 Vdc, 19..28 Vac (50-60 Hz)
Consumption	2 W @ 24 Vac (typical)
Isolation	1,5 kVac
State indicators	Power supply, serial communication, Ethernet connection, microSD in use
Pollution degree	2
Protection degree	IP20
Enclosure	Nylon 6 with 30% glass fiber, V0 self-extinguished class
Installation	35 mm DIN rail guide
Connections	Removable terminal block
Operating Temperature	-20..+70 °C
Dimensions	17,5x100x112 mm
Weight	170 g

COMMUNICATION

Ethernet	Nr. 1 Fast Ethernet PORT 10/100Tx RJ 45 on frontal Up to 8 simultaneous client Modbus TCP-IP supported
Serial	Nr. 1 RS232/485 port switchable, baud rate max 115k on terminals Nr. 1 RS485 port, baud rate max 115k on IDC10 connector
USB	Nr. 1 microUSB port
Supported protocols	Modbus TCP-IP, Modbus RTU
Working mode	Bridge Modbus TCP-IP - Modbus RTU Gateway Modbus TCP-IP - Modbus RTU, 2 Master port Gateway Modbus TCP-IP - Modbus RTU, 1 Master port, 1 Slave port Gateway Modbus TCP-IP - Modbus RTU, 2 Slave port Remote Serial Port COM on RS232/RS485 switchable port

CPU, MEMORY

CPU	ARM 32 bit
Slot per microSD	Yes
Supported memories	Up to 32 GB HC

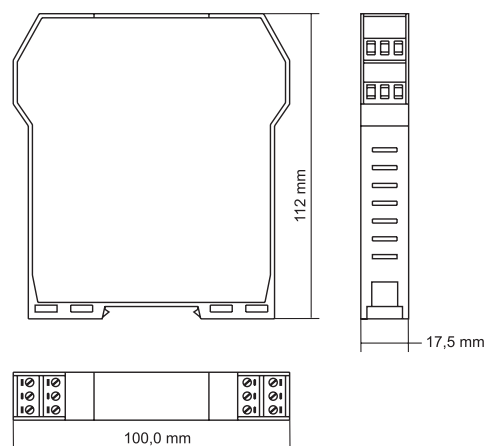
PROGRAMMING

Software	EASY SETUP, Template Excel (tag), SDD, SESC, EASY Z-KEY
Webserver	Yes

STANDARD

Approval	CE
Rules	EN61000-6-4, EN61000-6-2, EN61010-1

DIMENSION



ORDER CODE

Code	Description
Z-KEY-0	Modbus / Ethernet Industrial Gateway – Serial Device Server

SOFTWARE

EASY Z-KEY	Basic configuration tool for IP address
SESC	SENECA Ethernet to Serial Connection per Z-KEY, Z-PASS1, Z-PASS2
SDD	SENECA Discovery Device, IP scanner per Z-KEY, Z-PASS1, Z-PASS2

ACCESSORIES

PM004610	Serial communication cable Z-KEY (DB9M / MEF 10-12)
MSD	microSD with adaptor
KIT-USB	Programming toolkit for USB interface instruments
Z-PC-DINAL2-17.5	Back rail 17.5 mm width modules – Power/Bus conn. + 1 slot



Via Austria, 26 • 35127 Padova - (I) - Tel. +39 049 87.05.359
Fax +39 049 87.06.287 • www.seneca.it • info@seneca.it

The material in this document is for information only and is subject to change without notice. While reasonable efforts have been made in the preparation of this document to assure its accuracy, SENECA assumes no liability resulting from errors or omissions, or from the use of the information contained herein.

